

RECOMMENDED SPARES		
QTY.	ITEM#	DESCRIPTION
8	020338	ARM SPRG 10" DRILLED/SC
32	400709.4	SHIM PHENOLIC
4	020896	SPRING ISO ALC 95 RED
1	010703	KIT RPR F/ISO-DRIVE (SMALL)

PRODUCT SPECIFICATIONS		
PRODUCT:	DRIED CHEESE CHIPS	
CONDITION:	DRIED	
SIZE:	VARIABLE	mm (in)
BULK DENSITY:	160 (10)	kg/m <sup>3</sup> (lb/ft <sup>3</sup> )
CAPACITY:	1588 (3500)	kg/hr (lb/hr)

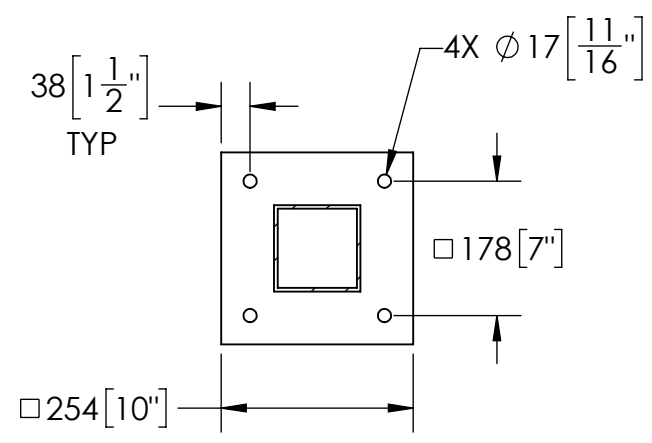
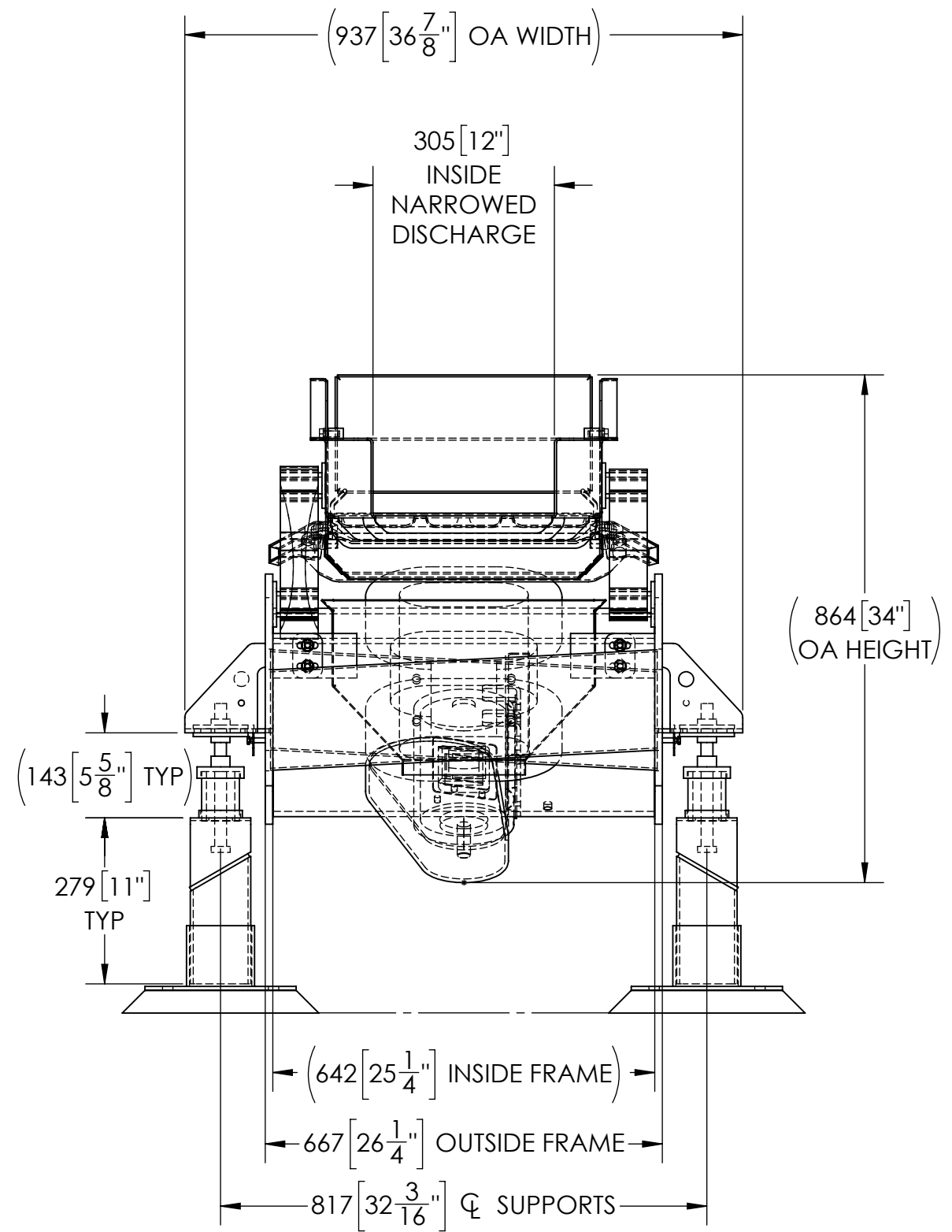
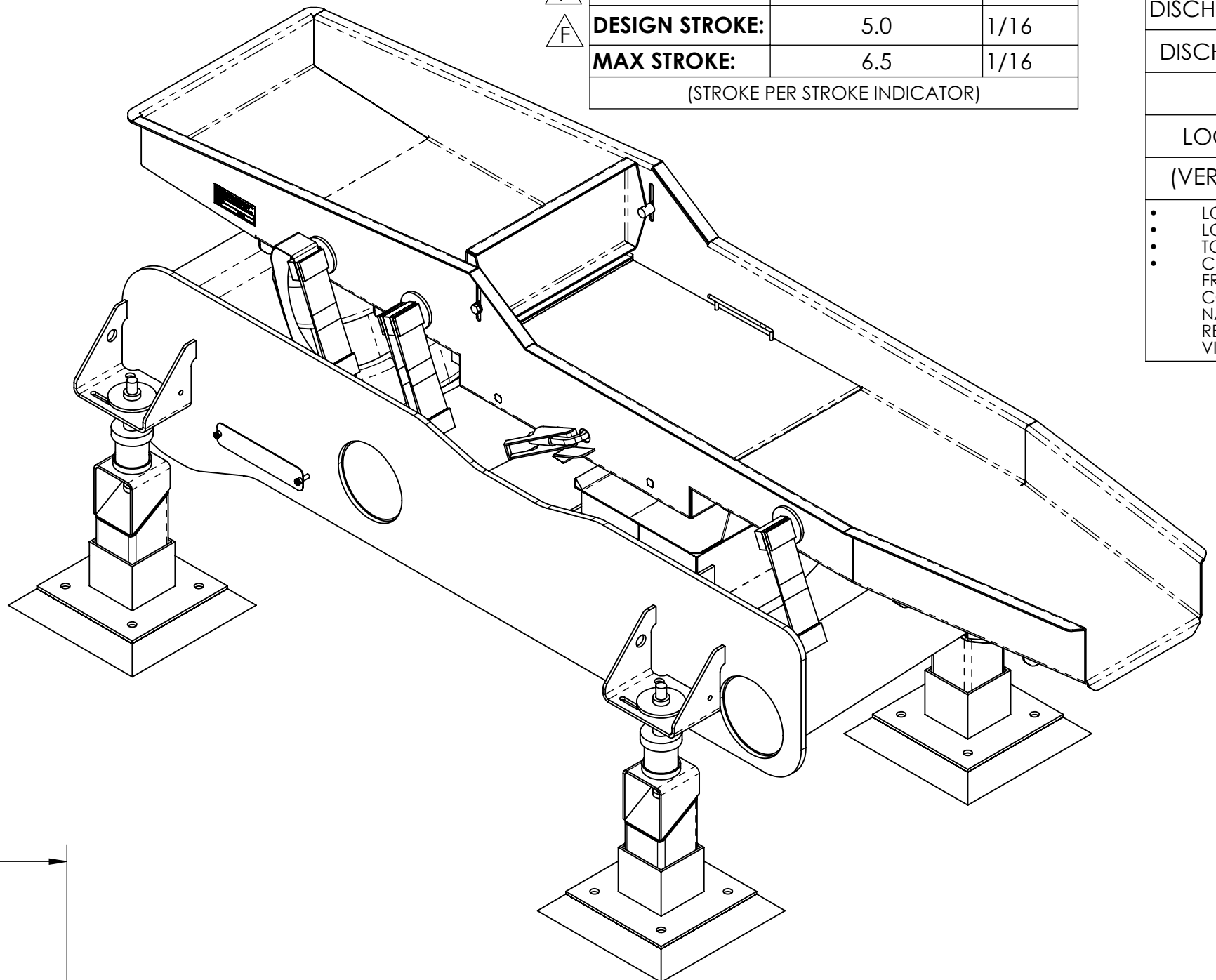
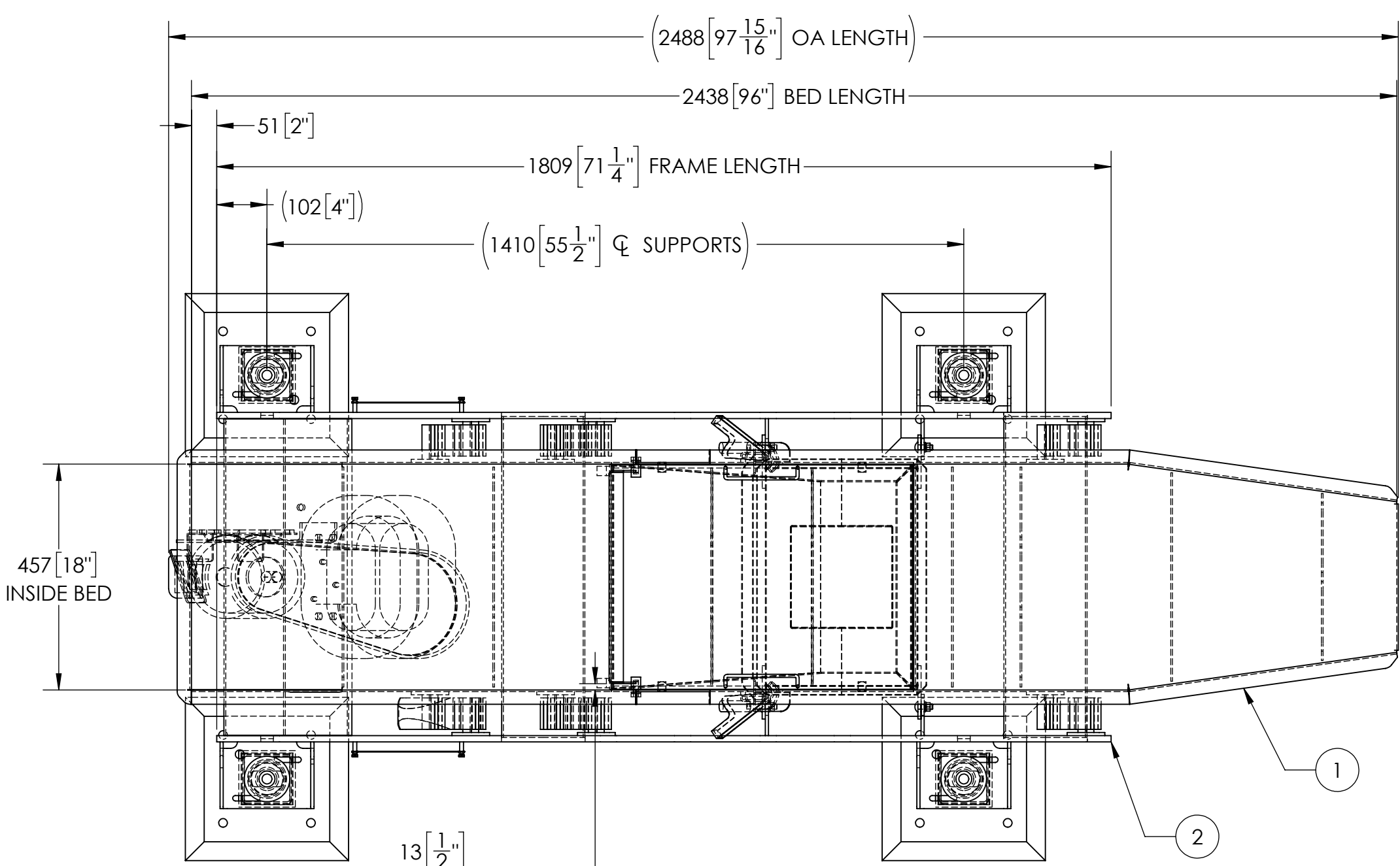
SHAKER SPECIFICATIONS			
CONSTRUCTION	BED:	SMOOTH SS	
	FRAME:	SS	
	SUPPORTS:	SS	
	BED MASS:	78 [171]	kg [lbs]
	FRAME MASS:	310 [683]	kg [lbs]
	DESIGN SPEED:	885	RPM
	DESIGN STROKE:	5.0	1/16
	MAX STROKE:	6.5	1/16

(STROKE PER STROKE INDICATOR)

DYNAMIC LOADS				
	SHUT DOWN		RUNNING	
	[kg [lb]] @ APPROX 300RPM		[kg [lb]]	
	VERT	HORZ	VERT	HORZ
INF RIGHT <1>	42 [92]	42 [92]	2 [4]	5 [11]
INF LEFT <2>	42 [92]	42 [92]	2 [4]	5 [11]
DISCH RIGHT <3>	42 [92]	42 [92]	2 [4]	5 [11]
DISCH LEFT <4>	42 [92]	42 [92]	2 [4]	5 [11]

STATIC LOADS				
LOCATION	1	2	3	4
(VERT kg [lb])	112 [247]	112 [247]	82 [180]	82 [180]

- LOADS SHOWN PER ISOLATOR
- LOAD CONDITION IS AT TOP OF SUPPORT
- TOTAL LOAD IS THE SUM OF THE STATIC AND DYNAMIC LOADS
- CUSTOMER MUST VERIFY THAT DYNAMIC LOADS APPLIED AT A FREQUENCY EQUAL TO THE SHAKER DESIGN SPEED DO NOT COINCIDE WITH THE FLOOR, DECK, OR CEILING STRUCTURAL NATURAL FREQUENCY. FAILURE TO DO SO CAN RESULT IN A RESONANCE CONDITION THAT MAY CAUSE UNACCEPTABLE VIBRATION.



END USER: ARTHUR SCHUMAN - ELGIN, IL

THE FOLLOWING TRADEMARKS USED HEREIN ARE OWNED BY KEY TECHNOLOGY, INC.: ISO-DRIVE, ISO-FLO, VECTOR-LOCK

- NOTES**
- DUAL DIMENSIONS IN BRACKETS [ ] ARE IN INCHES
  - FINISHING GUIDELINES: ENHANCED SANITARY DESIGN & MANUFACTURE (BY KEY)
  - INSTALLATION INSTRUCTIONS:
    - NO RIGID CONNECTIONS WITH BED, FRAME, OR ANY SHAKER COMPONENT ALLOWED
    - CLEARANCES: 38 [1-1/2"] MINIMUM CLEARANCE MUST BE MAINTAINED BETWEEN MATING EQUIPMENT
    - COLUMN BASEPLATE: REF DWG 415188 FOR COLUMN BASEPLATE ANCHOR REQUIREMENTS
  - ADJUSTABLE PEDESTAL "SLIP JOINTS" ARE NOT RATED FOR LOAD CAPACITY UNTIL WELDED AFTER ADJUSTMENT. DO NOT PLACE WEIGHT OF MACHINE ON SUPPORT UNTIL SLIP JOINTS HAVE BEEN WELDED ALL AROUND WITH A 5 [3/16"] FILLET. FAILURE TO DO SO MAY RESULT IN PERSONAL INJURY AND EQUIPMENT LOSS.

**ENGRAVING DETAIL**

**MS MARCHANT SCHMIDT INC.**  
 24 WEST LARSEN DRIVE  
 FOND DU LAC, WI USA 920-921-4760  
 MODEL M03783001  
 SER.# 37452-001 YR.BLT. 2016

NOTE: DRIVE ATTACHMENT BOLTS ARE 17-4 SS

**PARTS LIST ON SHEET 2**

CUSTOMER	MARCHANT SCHMIDT, INC. / FOND DU LAC, WI	CUST. PO#	0076100
SERIAL#	W1032096-010326	ITEM	1 QTY 1
SALES ORDER#	S1018007	SUPERVISOR	D. MINTER
<b>GENERAL TOLERANCES UNLESS OTHERWISE SPECIFIED</b>		DRAWING TO BE INTERPRETED PER ASME Y14.5	
X: ±2 X.X: ±1.5 X.XX: ±1.00 X.XXX: ±0.250 ANGLES: ±1°		HANDLING: ---	
DESIGNER: DCARLISLE 2014-04-21		EQUIPMENT CATEGORY: <b>VIBRATORY</b>	
DRAFTER: DCARLISLE 2014-05-19		MASS: 432.31 kg	
MODIFIED: JHEITZMAN 2014-06-21		STATUS: RELEASED	
MFG ENG: ---		KEY ISO-FLO FINES REMOVAL SHAKER 457 [18"] W x 2438 [96"] L	
CHECKED: DMINTER 2014-06-22		REV: ---	
DOC CTRL: ---		REV: ---	
APPROVED: DMINTER 2014-06-22		REV: ---	
REV. DESCRIPTION		REV: ---	
F AS-BUILT: CHGD RPM TO 885, STROKE TO 5.0		REV: ---	
D NOTE CHANGE - MODIFY DDD ZONE IN SCREEN AREA, ADDED DRIP BARS		REV: ---	
C NARROWED WIDTH OF METERING DAM, SHORTENED FRAME, RELOCATED SCREEN, RELOCATED DISCHARGE SUPPORTS, REDESIGNED SHAKER ACCORDINGLY. CUSTOMER APPROVAL		REV: ---	
B BED LENGTH WAS 80", INFEEED ELEVATION WAS 44", ADDED 1-1/2" OF GROUT, ADDED PRODUCT METERING DAM, RELOCATED SCREENING COMPONENTS, REDESIGNED SHAKER ACCORDINGLY. CUSTOMER APPROVAL		REV: ---	
A CUSTOMER APPROVAL		REV: ---	
REV. DESCRIPTION		REV: ---	

REV.	DESCRIPTION
F	AS-BUILT: CHGD RPM TO 885, STROKE TO 5.0
D	NOTE CHANGE - MODIFY DDD ZONE IN SCREEN AREA, ADDED DRIP BARS
C	NARROWED WIDTH OF METERING DAM, SHORTENED FRAME, RELOCATED SCREEN, RELOCATED DISCHARGE SUPPORTS, REDESIGNED SHAKER ACCORDINGLY. CUSTOMER APPROVAL
B	BED LENGTH WAS 80", INFEEED ELEVATION WAS 44", ADDED 1-1/2" OF GROUT, ADDED PRODUCT METERING DAM, RELOCATED SCREENING COMPONENTS, REDESIGNED SHAKER ACCORDINGLY. CUSTOMER APPROVAL
A	CUSTOMER APPROVAL

SCALE: 1:10 WHEN PRINTED FULL SCALE SHEET 1 OF 2


POS	QTY	DOC NUMBER	ITEM	DESCRIPTION
1	1	SH01-012286B	--	BED WELDMENT
2	1	SH01-012286F	--	FRAME WELDMENT
3	1	1159350	1159350.1G	SCRN PP 454 [17-7/8] X 610 [24] (BLANK) VL GRAINED MSI W/HANDLE
4	2	432480	432480.1	CLAMP SS VECTOR HD 7/16 HOOK
5	1	SH01-012286_MSC01	--	DAM WELDMENT
6	10	--	201813.310	WSHR FL SS M10
7	10	--	202079.310	WSHR LOCK SS M10
8	2	--	203908.325	BOLT SS HH M10-1.5 X 25
9	2	--	1109192	KIT PLATE PICTOGRAM WARN/LKO DE-EN S
10	1	--	1013103	MOT 1 HP 1740 TENV 230/460/60/3 143T SS INV DUTY WASHDOWN
11	1	425477	425477.2	DR ASSY HORZ SM 690-936 RPM 60 HZ
12	1	SH01-012286DP	--	DRAIN PAN
13	8	--	021027	BOLT SS CRG M10-1.50 X 30 (DIN 603 CL 8.8)
14	8	--	203915.309	NUT HEX SS M10-1.5
15	4	430191	430191.34	ARM ASSY 10 IN SNGL SC METRIC WELD-ON
16	2	430191	430191.35	ARM ASSY 10 IN DBL SC METRIC WELD-ON
17	1	1098970	1098970	ARM GROUND 10" SS T304
18	4	428515-4	428515.4	SPRG ASSY ALC 95 RED
19	4	420868-5	--	SUPPORT COLUMN 4" SQ ALC SS W/O BASE PLATE A=11" B=8-1/2"
20	4	424967-1	--	PEDESTAL FOOT SS 4-1/2" SQ A=4"
21	1	1133446	1133446	PLATE DATA PRODUCT GENERIC MDL/SERIAL/MFG ORIGIN WELD ON [NOT SHOWN]
22	4	406900	010607	WEIGHT KEY #07 [NOT SHOWN]
23	8	--	204550.310	NUT ACORN SS M10-1.5 [NOT SHOWN]
24	4	021956	021956	BOLT SS HH 5/8-11 X 2 3/4 17-4PH H1025 155KSI TENSILE
25	4	009217	009217	NUT PLD HEX 5/8-11 GR 5
26	1	--	019505	LUBRICANT OIL FOOD GRADE (1QT) [NOT SHOWN]



CUSTOMER SET:

SH01-012286,  
425477,  
415188,  
432480 SH3

MANUFACTURING SET:

D-SIZE:  
SH01-012286,  
SH01-012286B,  
SH01-012286F,  
DPL002\_641\_A

B-SIZE:  
SH01-012286B\_001 THRU 009,   
SH01-012286F\_001 THRU 004,  
SH01-012286DP,  
SH01-012286DP\_001 THRU 003,  
SH01-012286\_MSC01,  
SH01-012286\_MSC01\_001,  
420868,  
424967 SH 1

<b>GENERAL TOLERANCES</b> UNLESS OTHERWISE SPECIFIED				DRAWING TO BE INTERPRETED PER ASME Y14.5		HANDLING
X: ±2 X.X: ±1.5 X.XX: ±1.00 X.XXX: ±0.250 ANGLES: ±1°				EQP CATEGORY: <b>VIBRATORY</b>	MASS: 432.31kg	UNITS: mm/kg
DESIGNER	DCARLISLE	2014-04-21	STATUS:	RELEASED		
DRAFTER	DCARLISLE	2014-05-19	KEY ISO-FLO FINES REMOVAL SHAKER 457 [18"] W x 2438 [96"] L			REV
MODIFIED	JHEITZMAN	2014-06-21	ITEM NUMBER:	SH01-012286	REF MODEL:	SH01-010106
MFG ENG			DOC CTRL:	DMINTEER	2014-06-22	
CHECKED	DMINTEER	2014-06-22	APPROVED	DMINTEER	2014-06-22	D
This drawing, including the principles of design, is submitted with the agreement that it is not to be reproduced, copied or loaned in part or whole. It is not to be used in any manner that may constitute a detriment directly or indirectly to Key Technology, Inc.						SCALE: 1:18 WHEN PRINTED FULL SCALE
						SHEET 2 OF 2